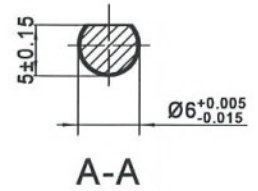


空心杯电机 Coreless Motor

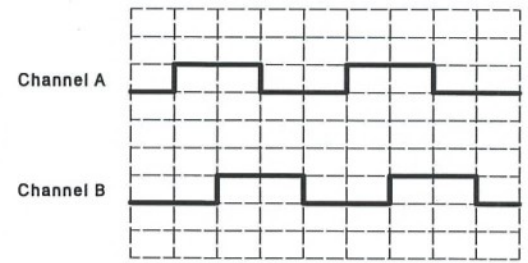
额定电压/Nominal voltage	18	V
空载转速/No-load speed (±10%)	111	rpm
空载电流/No-load current (max)	71.4	mA
额定转速/Nominal speed	88	rpm
最大连续转矩/Max. continuous torque (motor thermal limit)	554.8	mNm
最大连续电流/Max. continuous current (motor thermal limit)	0.590	A
堵转转矩/Stall torque	2.87	Nm
堵转电流/Stall current	3.16	A
环境温度范围/Ambient temperature	-40~+85	℃
绝缘等级/Insulation class	B	
重量/Weight	133.2	g
端电阻/Terminal resistance (motor) (±8%)	5.7	Ω
转矩常数/Torque constant (motor) (±8%)	17.05	mNm/A
转速常数/Speed constant (motor) (±8%)	560	rpm/V
转速/转矩斜率/Speed/torque gradient (motor)	188	rpm/mNm
电机空载转速/No-load speed (motor)	10100	rpm
电刷类型/Brushes type (motor)	Graphite brushes	
轴承类型/Bearing type(motor)	Ball bearing	
轴向间隙/Axial play (gearhead)	≤0.35	mm
级数/Number of stages (gearhead)	3	
减速比/Reduction ratio (gearhead)	90.25:1	
效率/Efficiency (gearhead)	59%	
类型/Type (encoder)	Incremental, Optical	
脉冲/转/Counts per turns (encoder)	200	
通道数/Number of channels (encoder)	2	



PIN No.	颜色/Colour	功能/Function
1	黑/Black	Vcc (5V)
2	棕/Brown	Channel B
3	橙/Orange	GND
4	黄/Yellow	Channel A

受控文件
日期 2024-10-10
鸣志电器(太仓)有限公司

输出信号/Output Signal



铭牌/Label Detail

MOONS'	
Motor Type	DCU24032G18-S106
Encoder Type	K16-200
Gearbox Type	PG22C-0090
Work Order	XXXXXXXX YYYY
Serial No.	

备注：二维码内包含产品名称、工单号、序列号。

Unit: mm
第一角画法
FIRST ANGLE METHOD
未注线性与角度尺寸公差
Tolerances for linear and angular dimensions
without individual tolerance indications
GB/T 1804-m eqv ISO 2768-1: m
未注形状与位置尺寸公差
Geometrical tolerance for features without
individual tolerance indications
GB/T 1184-K eqv ISO 2768-2: K

批准 Approve	
标准化 Standardize	
工艺 Process Review	
审核 Check	
设计 Design	
UNLESS OTHERWISE SPECIFIED	
NAMES	
SIGNATURE	
DATE	

MOONS'
moving in better ways

This document is released for information only. Its reproduction in whole or in part or its dissemination to third parties is prohibited. All trademarks and registered trademarks appearing on this document are the property of their respective owners.

A1	EC:24-1846 修改7处	2024.09.18
A0	原始版本 Original revision	2023.06.06
REV.	版本记录 REVISION RECORD	DATE