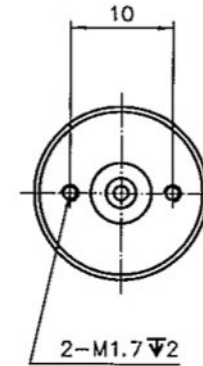
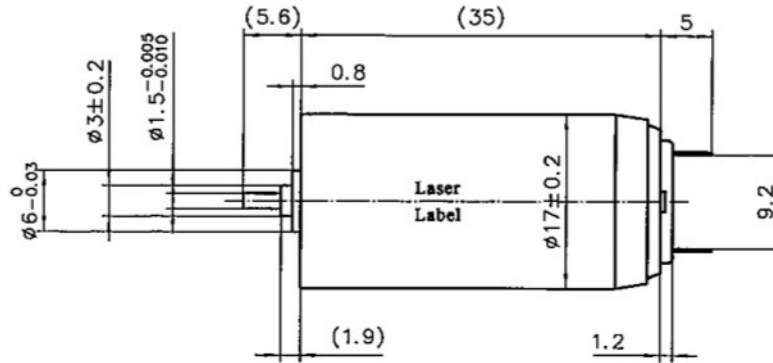
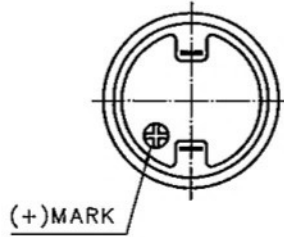


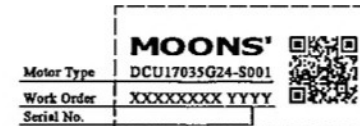
4611185000109



规格/Specification

额定电压/Nominal voltage	24	V
空载转速/No-load speed ($\pm 10\%$)	11500	rpm
空载电流/No-load current (max)	37.1	mA
额定转速/Nominal speed	9050	rpm
最大连续转矩/Max. continuous torque	7.72	mNm
最大连续电流/Max. continuous current	0.421	A
堵转转矩/Stall torque	37.12	mNm
堵转电流/Stall current	1.90	A
最大效率/Max. efficiency	79%	
端电阻/Terminal resistance ($\pm 8\%$)	12.6	Ω
端电感/Terminal inductance	0.453	mH
转矩常数/Torque constant ($\pm 8\%$)	19.49	mNm/A
转速常数/Speed constant ($\pm 8\%$)	490	rpm/V
转速/转矩斜率/Speed/torque gradient	317	rpm/mNm
机械时间常数/Mechanical time constant	3.78	ms
转子惯量/Rotor inertia	1.14	gcm ²
环境温度范围/Ambient temperature	-20~+85	℃
绝缘等级/Insulation class	B	
绕组最高温度/Max. winding temperature	125	℃
轴承/Bearing	Sleeve bearing	
轴向间隙/Axial play	≤ 0.3 mm	
电刷类型/Brushes type	Graphite brushes	
换向器片数/Number of commutator segments	5	
重量/Weight	41.4	g

铭牌/Label Detail



备注：二维码内包含产品名称、工单号、序列号。

Unit: mm
 第一角画法
 FIRST ANGLE METHOD
 未注公差与角度尺寸公差
 Tolerances for linear and angular dimensions without individual tolerance indications
 GB/T 1804-m eqv ISO 2768-1:m
 未注形位公差尺寸公差
 Geometrical tolerance for features without individual tolerance indications
 GB/T 1184-K eqv ISO 2768-2:K

批准 Approve	
标准化 Standard	
工艺 Technology	
审核 Check	
设计 Design	

MOONS' Coreless Brushed DC Motor
 Shanghai Moons' Electric Co., Ltd.

This document is released for information only. Its reproduction in whole or in part or its dissemination to third parties is prohibited. All trademarks and registered trademarks appearing on this document are the property of their respective owners.

A1	EC: 21-1175 更改2处	2021.06.24
A0	原始版本 Original revision	2019.09.02
REV.	版本记录 REVISION RECORD	DATE