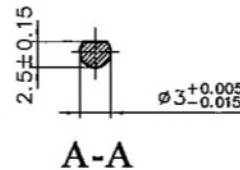
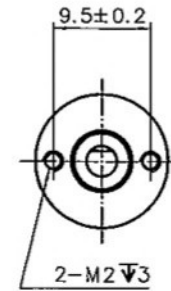
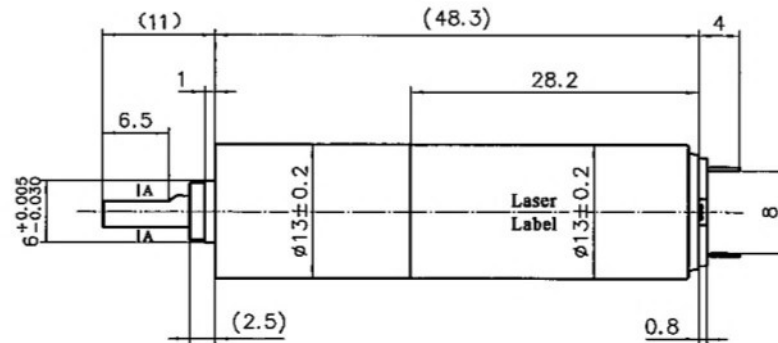
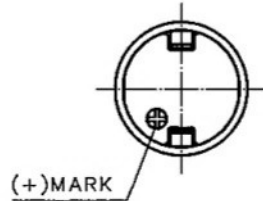


4611185000045



规格/Specification		
额定电压/Nominal voltage	24	V
空载转速/No-load speed (±10%)	715	rpm
空载电流/No-load current (max)	17	mA
额定转速/Nominal speed	486	rpm
最大连续转矩/Max. continuous torque (motor thermal limit)	45	mNm
最大连续电流/Max. continuous current (motor thermal limit)	0.186	A
堵转转矩/Stall torque	0.15	Nm
堵转电流/Stall current	0.57	A
环境温度范围/Ambient temperature	-20~+65	℃
绝缘等级/Insulation class	B	
重量/Weight	33.9	g
端电阻/Terminal resistance (motor) (±8%)	41.9	Ω
转矩常数/Torque constant (motor) (±8%)	19.89	mNm/A
转速常数/Speed constant (motor) (±8%)	480	rpm/V
转速/转矩斜率/Speed/torque gradient (motor)	1011	rpm/mNm
电机空载转速/No-load speed (motor)	11400	rpm
电刷类型/Brushes type (motor)	Precious metal brushes	
轴向间隙/Axial play (gearhead)	≤0.25	mm
级数/Number of stages (gearhead)	2	
减速比/Reduction ratio (gearhead)	16.47:1	
效率/Efficiency (gearhead)	81%	

铭牌/Label Detail

<b>MOONS'</b>		
Motor Type	DCU13028P24-S002	
Gearbox Type	FG13C-0016	
Work Order	XXXXXXXX YYYY	
Serial No.		

备注：二维码内包含产品名称、工单号、序列号。

REV.	版本记录 REVISION RECORD	DATE
A1	EC:21-1323 修改3处	2021.08.10
A0	原始版本 Original revision	2018.11.03

Unit: mm  
 第一角画法  
 FIRST ANGLE METHOD  
 未注公差与角度尺寸公差  
 Tolerances for linear and angular dimensions without individual tolerance indications  
 GB/T 1804-m eqv ISO 2768-1:m  
 未注形位公差尺寸公差  
 Geometrical tolerances for features without individual tolerance indications  
 GB/T 1184-K eqv ISO 2768-2:K

批准 Approve	标准 Standard	工艺 Technology	审核 Check	设计 Design

<b>MOONS'</b>		Coreless Brushed DC Motor	
Shanghai Moons' Electric Co., Ltd.			
This document is released for information only. Its reproduction in whole or in part or its dissemination to third parties is prohibited. All trademarks and registered trademarks appearing on this document are the property of their respective owners.			
Type: DCU13028P24-S002 + FG13C-0016	Rev. A1	SCALE 2:1	SHEET 1 OF 1