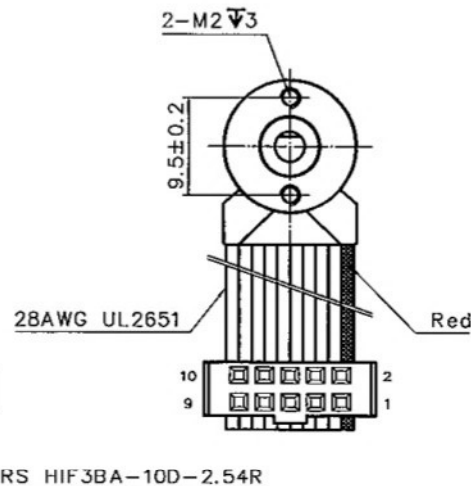
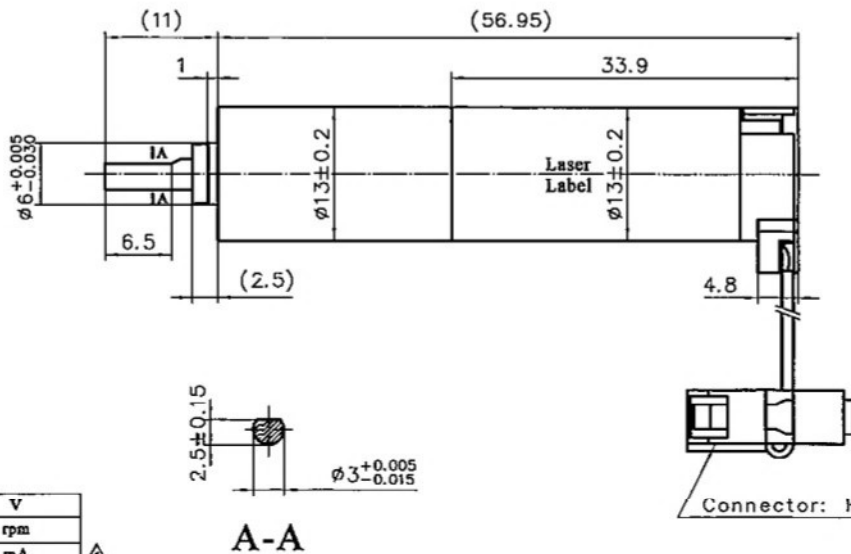
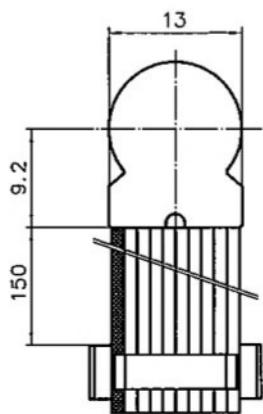


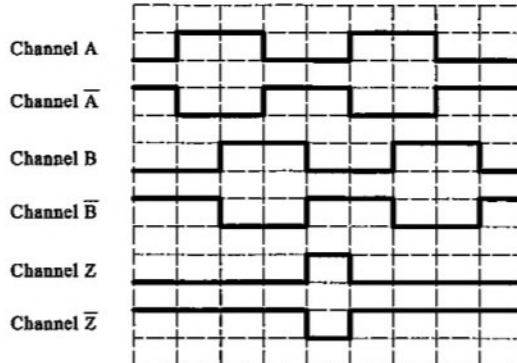
4611185000115



规格/Specification		
额定电压/Nominal voltage	12	V
空载转速/No-load speed (±10%)	173	rpm
空载电流/No-load current (max)	45.3	mA
额定转速/Nominal speed	120	rpm
最大连续转矩/Max. continuous torque (motor thermal limit)	157.6	mNm
最大连续电流/Max. continuous current (motor thermal limit)	0.358	A
堵转转矩/Stall torque	0.55	Nm
堵转电流/Stall current	1.15	A
环境温度范围/Ambient temperature	-20~+65	°C
绝缘等级/Insulation class	B	
重量/Weight	43.9	g
端电阻/Terminal resistance (motor) (±8%)	10.4	Ω
转矩常数/Torque constant (motor) (±8%)	9.84	mNm/A
转速常数/Speed constant (motor) (±8%)	970	rpm/V
转速/转矩斜率/Speed/torque gradient (motor)	1025	rpm/mNm
电机空载转速/No-load speed (motor)	11800	rpm
电刷类型/Brushes type (motor)	Precious metal brushes	
轴向间隙/Axial play (gearhead)	≤0.25	mm
级数/Number of stages (gearhead)	3	
减速比/Reduction ratio (gearhead)	66.86:1	
效率/Efficiency (gearhead)	73%	
类型/Type (encoder)	Incremental, Magnetic	
脉冲/转/Counts per turns (encoder)	256	
通道数/Number of channels (encoder)	3	

PIN No.	功能/Function
1	Motor (+)
2	Vcc (5V)
3	GND
4	Motor (-)
5	Channel A
6	Channel A
7	Channel B
8	Channel B
9	Channel Z
10	Channel Z

输出信号/Output Signal



线束相对于安装孔的位置±30°

铭牌/Label Detail

MOONS'

Motor Type	DCU13028P12-S005
Encoder Type	R13-256
Gearbox Type	PG13C-0066
Work Order	XXXXXXXXX YYYY
Serial No.	

备注：二维码内包含产品名称、工单号、序列号。

Unit: mm
第一角画法
FIRST ANGLE METHOD

未注线性与非线性尺寸公差
Tolerances for linear and angular dimensions without individual tolerance indications
GB/T 1804-m eqv ISO 2768-1:m

未注非注与位置尺寸公差
Geometrical tolerances for features without individual tolerance indications
GB/T 1184-K eqv ISO 2768-2:K

批准 Approve	
标准化 Standard	
工艺 Technology	
审核 Check	
设计 Design	
NAMES	
SIGNATURE	
DATE	

MOONS' Coreless Brushed DC Motor
Shanghai Moons' Electric Co., Ltd.

This document is released for information only. Its reproduction in whole or in part or its dissemination to third parties is prohibited. All trademarks and registered trademarks appearing on this document are the property of their respective owners.

A1	EC:2-1323 修改3处	2021.08.10
A0	原始版本 Original revision	2019.09.11
REV.	版本记录 REVISION RECORD	DATE

Type: DCU13028P12-S005 + R13-256 + PG13C-0066
Rev. A1 SCALE 2:1 SHEET 1 OF 1