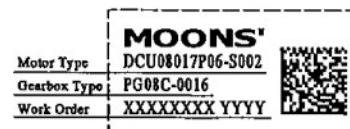


A-A

铭牌/Label Detail



受控文件
日期 2022-01-05
上海鸣志电器股份有限公司

备注：二维码内包含产品名称、工单号、序列号。

C 空心杯电机 Coreless Motor

规格/Specification		
额定电压/Nominal voltage	6	V
空载转速/No-load speed (±10%)	845	rpm
空载电流/No-load current (max)	39.2	mA
额定转速/Nominal speed	206	rpm
最大连续转矩/Max. continuous torque (motor thermal limit)	6.5	mNm
最大连续电流/Max. continuous current (motor thermal limit)	0.165	A
堵转转矩/Stall torque	0.01	Nm
堵转电流/Stall current	0.21	A
环境温度范围/Ambient temperature	-20~+65	℃
绝缘等级/Insulation class	B	
重量/Weight	7.7	g
端电阻/Terminal resistance (motor) (±8%)	28.0	Ω
转矩常数/Torque constant (motor) (±8%)	3.96	mNm/A
转速常数/Speed constant (motor) (±8%)	2410	rpm/V
转速/转矩斜率/Speed/torque gradient (motor)	17030	rpm/mNm
电机空载转速/No-load speed (motor)	13500	rpm
电刷类型/Brushes type (motor)	Precious metal brushes	
轴向间隙/Axial play (gearhead)	≤0.15	mm
级数/Number of stages (gearhead)	2	
减速比/Reduction ratio (gearhead)	16:1	
效率/Efficiency (gearhead)	81%	

Unit: mm
第一角画法
FIRST ANGLE METHOD
未注线性与角度尺寸公差
Tolerances for linear and angular dimensions
without individual tolerance indications
GB/T 1804-m eqv ISO 2768-1 : m
未注形状与位置尺寸公差
Geometrical tolerance for features without
individual tolerance indications
GB/T 1184-K eqv ISO 2768-2 : K

批准 Approve	
标准化 Standardize	
工艺 Process Review	
审核 Check	
设计 Design	

MOONS'
moving in better ways

This document is released for information only. Its reproduction in whole or in part or its dissemination to third parties is prohibited. All trademarks and registered trademarks appearing on this document are the property of their respective owners.

A0	原始版本 Original revision	2021.12.30	UNLESS OTHERWISE SPECIFIED	NAMES	SIGNATURE	DATE	Drawing No: 4611185000336	Rev. A0	SCALE2:1	Sheet 1 of 1
REV.	版本记录 REVISION RECORD	DATE								